



PIPE BOOTS

# Universal Master Flash®

The universal flashing is designed to fit most panel configurations. Plus, the sleeve flexibility absorbs vibration and pipe movement caused by expansion & contraction!



#3 Universal Master Flash®  
**Dark Gray**  
**Standard EPDM**



#3 Universal Master Flash®  
**Red, High**  
**Temperature Silicone**



#3 Universal Master Flash®  
**Gray, High**  
**Temperature Silicone**

**20**  
YEAR  
WARRANTY

**Master Flash®**  
**Pipe Flashing Limited Product Warranty**

Advanced Ozone Resistance tested to...	EPDM 10 hour @ 500 ppb	HIGH TEMP GREY SILICONE 10 hour @ 500 ppb
High Temperature Resistance Tested to	Intermittent +135°C (+275°F)	Continuous +250°C (+482°F)
Low Temperature Resistance tested to...	-58°C (-67°F)	-74°C (-101°F)
Compression Set Maximum...	25%	50%

\*Consult specification data and testing methods available upon request.

**Standard EPDM Colors (Color Code):** Dark Gray (NG), Dark Green (DG), Bright Red (BR), White (WT), & Brown (BN)

**Standard High Temperature Silicone Colors (Color Code):** Red (RA), Gray (GX)

**Special Order EPDM Colors (Color Code):** Black (BA), Gray (GG), Light Green (LG), Dark Blue (DB), Light Blue (LB), Terra Cotta (TC), Copper (CP), & Tan (TN)

**Special Order High Temperature Silicone Color:** Black (BA)

## 5 EASY STEPS

Measure & Trim:

Slide On

Form

Seal

Fasten



Mini



#1



#2



#3



#4



#5



#6



#7



#8



#9

\*See all SKU specs on back page\*

- BN-Brown
- BA-Black
- NG Dark Gray
- GG-Gray
- WT-White
- DG-Dark Green
- LG-Light Green
- DB-Dark Blue
- LB-Light Blue
- BR-Bright Red
- TC-Terra Cotta
- CP-Copper
- TN-Tan

# Universal Master Flash® Specs

Please see the sizing below. Select the appropriate version for your pipe or duct diameter, only using maximum pipe diameters on minimal roof angles. For extreme pitch or surface irregularity, select the next larger size.

Product	Standard EPDM; Part # Include Color Code -- NG, DG, BR, WT, BN	Red; High Temp Silicone Part #	Gray; High Temp Silicone Part #	Pipe Range	Top Opening	Overall Height	Base
Mini	RD051--	RD052RA	RD052GX	Closed - 1" (0 - 25 mm)	Closed	1.5" (38 mm)	4" (101 mm)
#1	RD101--	RD102RA	RD102GX	Closed - 1 7/8" (0 - 47 mm)	Closed	2 7/8" (73 mm)	4.75" (120 mm)
#2	RD201--	RD202RA	RD202GX	1.75" - 3" (45 - 76 mm)	1.75" (45 mm)	3.5" (88 mm)	6.25" (158 mm)
#3	RD301--	RD302RA	RD302GX	Closed - 5" (0 - 127 mm)	Closed	3.75" (95 mm)	7.75" (196 mm)
#4	RD401--	RD402RA	RD402GX	3" - 6.25" (75 - 160 mm)	3" (75 mm)	4" (101 mm)	9.25" (234 mm)
#5	RD501--	RD502RA	RD502GX	4.25" - 7.5" (108 - 190 mm)	4.25" (108 mm)	4.5" (114 mm)	10.5" (266 mm)
#6	RD601--	RD602RA	RD602GX	5" - 9" (127 - 228 mm)	5" (127 mm)	4.75" (120 mm)	12.5" (317 mm)
#7	RD701--	RD702RA	RD702GX	6" - 11" (150 - 280 mm)	6" (150 mm)	6" (150 mm)	14.5" (368 mm)
#8	RD801--	RD802RA	RD802GX	7" - 13" (175 - 330 mm)	7" (175 mm)	6.5" (165 mm)	16.5" (412 mm)
#9	RD901--	RD902RA	RD902GX	9" - 20" (228 - 508 mm)	9" (228 mm)	8.75" (222 mm)	25.25" (641 mm)



00372308



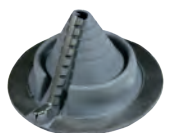
PIPE BOOTS

# Universal Retrofit Master Flash®



This fast, one-piece construction allows for easy on-site installation! Also, the base is specifically designed to form a seal on most panel configurations & roof pitches - regardless of pipe location!

Product	Pipe Range	Top Opening	Cut to Suit Pipe Size	Base
#1 Dark Gray EPDM RF101NG-RD	7/8" - 2.5" (22 - 63 mm)	7/8" (22 mm)	7/8" - 2.5" (22 - 63 mm)	6.25" (158 mm)
#1 Red Silicone RF102RS-RD	7/8" - 2.5" (22 - 63 mm)	7/8" (22 mm)	7/8" - 2.5" (22 - 63 mm)	6.25" (158 mm)
#2 Dark Gray EPDM RF201NG-RD	2" - 6.5" (50 - 165 mm)	2" (50 mm)	2" - 6.5" (50 - 165 mm)	10.75" (273 mm)
#2 Red Silicone RF202RS-RD	2" - 6.5" (50 - 165 mm)	2" (50 mm)	2" - 6.5" (50 - 165 mm)	10.75" (273 mm)
#3 Dark Gray EPDM RF301NG-RD	3.25" - 10" (95 - 254 mm)	3.25" (95 mm)	3.25" - 10" (95 - 254 mm)	14.5" (368 mm)
#3 Red Silicone RF302RS-RD	3.25" - 10" (95 - 254 mm)	3.25" (95 mm)	3.25" - 10" (95 - 254 mm)	14.5" (368 mm)



#1  
RF101NG-RD



#1  
RF102RS-RD



#2  
RF201NG-RD



#2  
RF202RS-RD



#3  
RF301NG-RD



#3  
RF302RS-RD

Special Order EPDM Colors: Black & Gray | Special Order High Temperature Silicone Color: Gray

### 5 EASY STEPS



Measure & Trim

Wraparound

Crimp

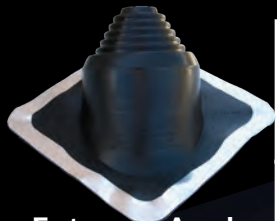
Seal

Fasten

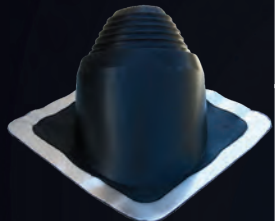


# Other Offerings

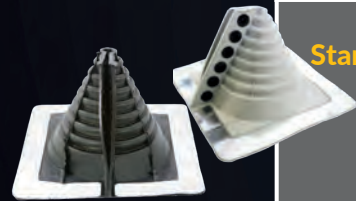
## Master Flash<sup>®</sup>



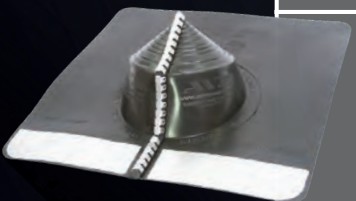
**Extreme Angle  
#1 / EA101BA**



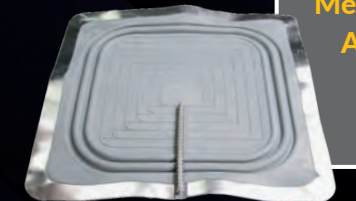
**Extreme Angle  
#2 / EA201BA**



**Standard  
Retrofit Square**



**Electrical Mast  
Connection**



**Metal Roof Vent  
Sealing Adapter  
Multi-Flash**

Product	Pipe Range	Top Opening	Cut to Suit Pipe Size	Base
<b>Extreme Angle #1 Black EPDM EA101BA</b> <i>Built in 10/12 pitch angle</i>	Closed - 5.75" (0 - 146 mm)	Closed	Closed - 5.75" (0 - 146 mm)	11" (279 mm)
<b>Extreme Angle #2 Black EPDM EA201BA</b>	4 - 8" (101 - 203 mm)	4" (101 mm)	4-8" (101 - 203 mm)	14.25" (362 mm)
<b>Standard Retrofit Square #1 Black EPDM RF101BP</b> <b>#1 Gray EPDM RF101GP</b>	7/8" - 4" (22 - 101 mm)	7/8" (22 mm)	7/8" - 4" (22 - 101 mm)	8.07" (205 mm)
<b>Electrical Mast Connection Black EPDM EMC101BS</b>	Closed - 5.35" (0 - 136 mm)	Closed	Closed - 5.35" (0 - 136 mm)	15" (381 mm)
<b>Metal Roof Vent Sealing Adapter Multi-Flash Dark Gray EPDM RVA101NG-MF</b>	Closed - 12" (0 - 305 mm)	Closed	Closed - 12" (0 - 305 mm)	24" (609 mm)

### Gutter Expansion Joint

- Gray EPDM linear flashing with flexible metal sides
- Thickness: 0.065"
- Length: 50'
- Available in 9", 12" and 18" widths

Part Numbers: LF067G9-50, LF067G12-50, LF067G18-50

