



# TITANN BOARD®

## INSTALLATION GUIDE

### ENVIRONMENTAL CONDITIONING & INSPECTION:

Acclimate Titann Board to the temperature and humidity of the installation area for at least 24 hours prior to installation.

Ideal installation environment: 50°F to 85°F with controlled humidity.

The installer/customer is responsible for verifying the material prior to installation:

- Check for damage, warping, or color variation.
- Confirm all quantities and lengths.
- Installed product will be considered accepted.

### TOOLS REQUIRED:

- Tape measure
- Level
- Tapping Block
- Impact driver or screw gun
- #1 square-drive bit
- Cut with one of the two:
  - Circular saw with 120(+) tooth sawblade
  - Grinder with cutting diamond blade
- Caulk gun
- Clamps (optional but helpful)

### MATERIALS:

- Titann Board Panels
- Compatible wood or steel screws (#1 square-drive, Stainless Steel)
- Base Trim, J-Trim, Joint Molding, Inside Corner, J-Trim, Outside Corner
- 100% silicone caulk

#### Wood Screw



1.25" or 0.75"

#### Steel Screw



1.25" or 0.75"

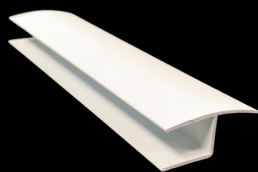


#### Truss Head #1 Square Drive

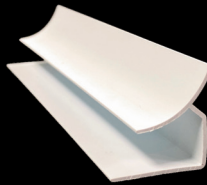
## MOLDINGS



**Base Trim**  
Part #: 765BASETRIM



**Joint Molding**  
Part #: 765JNTMLD



**Inside Corner /  
Crown Molding**  
Part #: 765INSCNR



**End Cap / J Trim**  
Part #: 765ENDCAP



**Outside Corner**  
Part #: 765OUTCNR

### FRAMING PREP:

1. Install framing (wood or steel) every 16" to 24" max on-center.
2. Where wall-mounted equipment or fixtures will be installed, add laminated plywood backing for support.
3. Ensure framing is plumb, square, and dry.

### CUTTING & EXPANSION:

- When cutting Titann Board, leave a ¼" (6mm) expansion gap around all edges to allow for natural movement.
- Do not force panels tight against trim or walls.

## PANEL



# TITANN BOARD®

## INSTALLATION GUIDE



### INSTALLATION STEPS:

#### A. Ceilings (Install First if Applicable)

1. Begin with the ceiling if part of the installation.
2. Install J-Trim at the perimeter edges of the ceiling to support the first panel.
3. Insert Titan Board panels into J-Trim. Ensure the first panel is square and level.
4. If using panels at the ceiling-to-wall transition, install an inside corner trim along the top of the walls to meet the ceiling panels.

#### B. Walls

1. Install J-Trim or Base Trim at the base of the walls.
2. Insert the first Titan Board panel into the base J-Trim, making sure it's square and plumb.
3. Secure the panel by screwing through the tongue edge into studs using pre-drilled holes or marked guides.
  - Do not overtighten screws; they should be snug but allow for expansion.
4. Continue inserting and fastening subsequent panels, ensuring tongue-and-groove joints are properly seated.
5. At the top of the wall, if ceiling is not done, install J-Trim or Inside Corner to cap the wall panels.

#### C. Corners, Windows, and Doors

Use:

- Inside Corner Trim or Back-to-Back J-Trim in interior corners.
- J-Trim around windows and door frames for a clean, finished edge.

#### Sealing & Final Touches

- Apply 100% silicone caulk (Available for Purchase at MWI Components) at:
  - All corner joints
  - Wall-to-ceiling transitions
  - Around penetrations (doors, windows, fixtures)
- Smooth caulk for clean finish.
- Wipe down surfaces with mild soap and water after installation.

MWI Components is not responsible for problems related to expansion due to temperature fluctuations. If wide temperature fluctuations exist in the area of installation, oversized holes for screws are recommended. You must also leave slight expansion and construction gaps between panel ends and moldings. The information contained in this document is presented in good faith and is believed to be accurate but without guarantee. Conditions of use are beyond our control and all risks are assumed by the user.

IN-173 01732508PAV

**MWI**  
COMPONENTS

800-360-6467

MWICOMPONENTS.COM  
©MWICOMPONENTS 2025