

## SABRE LATCH®

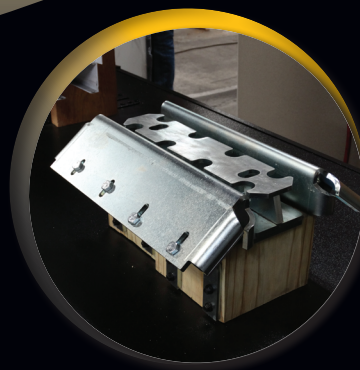
- Lockable latch for 3.5" split or single sliding doors
- Exterior lockable, polished, stainless steel handle
- Zinc plated, center case with inside handle
- Quick mount bracket design installs within minutes to MWI 3300 & 4400 Series Vertical Rail
- ½" latch rod securely retains split sliders when used in conjunction with the MWI BC87 Center Guide
- Interior latch functions even when exterior handle is locked



Inside view of Sabre Latch® looking out; right side—latched; left side—unlatched

## BC87 CENTER DOOR GUIDE

- Universally mounts to:
  - (2) 6X6 posts
  - (2) 3-Ply Laminated Columns
  - Cement column using masonry anchors
  - Wet set applications



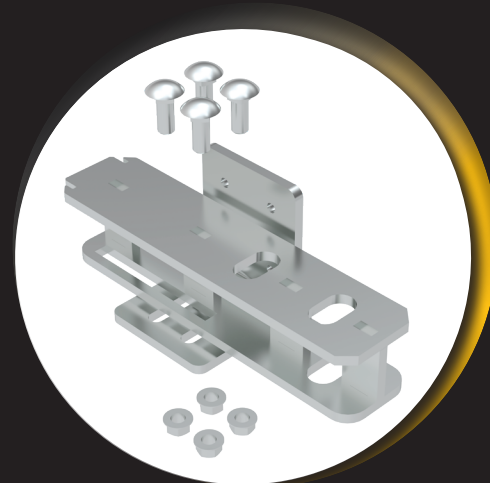
- Center Door Guide for Sabre Latch® included
- Heavy, ¼" thick, zinc-plated steel construction provides drive-over protection
- Provides the receiver for the Sabre Latch®—ensures split slider door coupling is complete and secure
- Additional length of the BC87 center guide provides twice the amount of side wall engagement and lift retention as competitor's guides

## SABRE SLIM

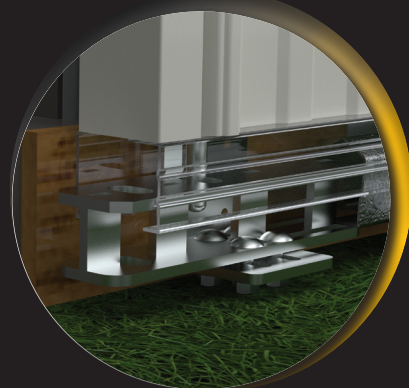
- Lockable latch for 1.5" split or single sliding doors
- Exterior lockable, polished, chrome plated handle
- Zinc plated, center case with inside handle
- Quick mount bracket design installs within minutes to MWI 2200 Series Vertical Rail
- 1/2" latch rod securely retains split sliders when used in conjunction with the MWI BC83 Center Guide
- Interior latch functions even when exterior handle is locked



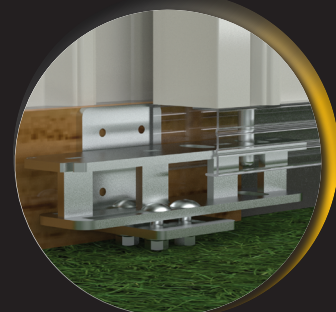
## Sabre Latch or Sabre Slim RECEIVERS For Single Doors



Receiver/Bracket



**Door Open, Latch Engaged**  
1 Receiver/bracket & hardware for the latch open and latch closed positions



**Door Closed, Latch Engaged**  
Receiver is designed to engage the TBSG to maintain alignment

## BC83 CENTER DOOR GUIDE

- Heavy, 1/4" thick, zinc-plated steel construction provides drive-over protection
- Surface mounts in a variety of applications
- Provides the receiver for the Sabre Slim—ensures split slider door coupling is complete & secure
- Split Door kit also includes a latch open receiver

