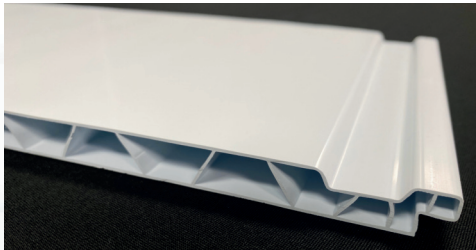


TITAN BOARD

Titan Board offers a versatile, easy-to-install cladding solution for both contractors and DIY enthusiasts, suitable for almost any indoor wall or ceiling project. With an installed cost comparable to painted plywood, these PVC sheets provide a cost-effective, high-performing alternative that combines durability with bright, visually appealing aesthetics. The glazed white finish is UV-resistant, maintaining its appearance without fading or yellowing even after long exposure to natural light.

FEATURES

- GOOD FIRE RESISTANCE (CLASS A)
- APPROVED BY USDA & IS FOOD SAFE
- JOINT-FREE DESIGN WITH NO VISIBLE FASTENERS
- HIGH UV PROTECTION
- RESISTANT TO STAINS, MILDEW, HUMIDITY AND SHOCK
- EASY TO CLEAN AND MAINTAIN
- LIGHTWEIGHT, QUICK AND EASY TO INSTALL



APPLICATIONS

- RESIDENTIAL (GARAGE, LAUNDRY ROOM)
- COMMERCIAL (CAR WASH, AGRICULTURAL BUILDING)
- INSTITUTIONAL (FOOD PROCESSING PLANT)
- INDUSTRIAL (SLAUGHTERHOUSE, COLD ROOM)



SPECIFICATIONS

Technical Support - Physical Property		
Test Name	ASTM n	Value/Units
Hardness, Rockwell R	R-785	D 112
Izod Impact	D-256	18 ft/lbs/in
Flexural Strength	D-790	11200 PSI
Flexural Modulus	D-790	380000 PSI
Tensile Field	D-638	620 PSI
Tensile Modulus	D-638	380000 PSI
Tensile Impact	D-1822	72 ft/lbs/in
Flame Spread Index **	**E-84-05	20
Spoke Developed Value	**E-84	400

Available Sizes	Part #
16"x8'	76500008
16"x10'	76500010
16"x12'	76500012
16"x14'	76500014
16"x16'	76500016
16"x20'	76500020

TITAN BOARD FACT

The reflective, bright white finish of the Titan Board enhances indoor lighting and provides a clean, modern look. With antibacterial properties that meet HACCP standards, they are especially well-suited for use in food processing and handling spaces.

800-360-6467

MWICOMPONENTS.COM

©MWICOMPONENTS 2025

TITAN BOARD

INSTALLATION

Titan Board can be fastened every 16 inches directly into wood or metal studs. It can also be attached at joints, creating a seamless appearance with no visible screws. The installation is quick and efficient, reducing labor costs, and our range of lengths enables a flawless finish without horizontal joints.

To achieve water-resistant results, we recommend using 100% silicone caulk. Feel free to inquire with a MWI representative about the all-purpose silicone caulk available with MWI.

Part #: 765AD



Screws are sold separately and come in wood or steel compatible options. These screws are designed to firmly attach Titan Board to any surface. Featuring a truss head & a square drive screw, they ensure a strong grip during installation. It is suggested to use a #1 square drive screwdriver/bit when installing.

Part #	Material	Head	Length	Quantity/Bag
Steel Truss Screw				
765075MT	Stainless Steel	#6 Head	0.75"	500 Per Bag
765125MT	Stainless Steel	#6 Head	1.25"	500 Per Bag
Wood Truss Screw				
765075WT	Stainless Steel	#6 Head	0.75"	500 Per Bag
765125WT	Stainless Steel	#6 Head	1.25"	500 Per Bag



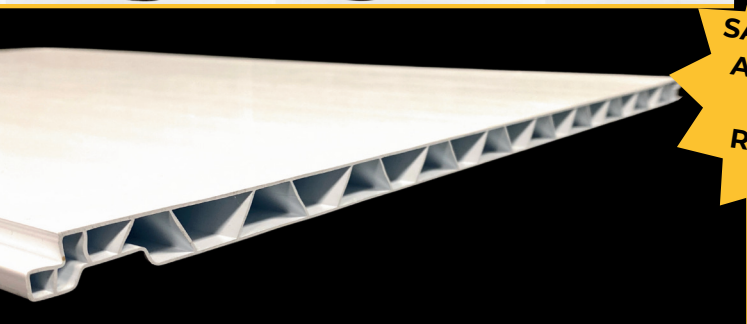
Wood Screw



Steel Screw

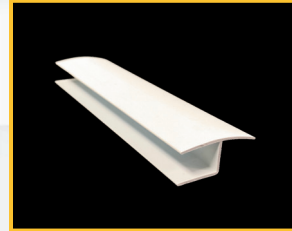


Truss Head
#1 Square Drive

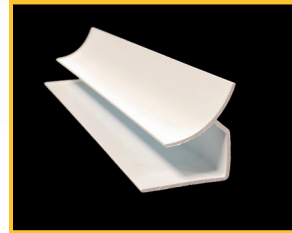


**SAMPLE KITS
AVAILABLE
UPON
REQUEST!**

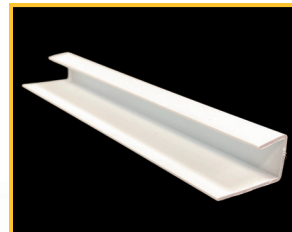
MOLDINGS



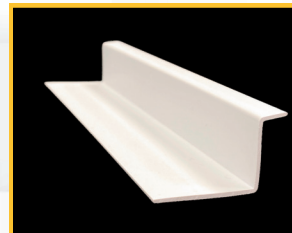
Joint Molding
Part #: 765JNTMLD



**Inside Corner /
Crown Molding**
Part #: 765INSCNR



End Cap / J Trim
Part #: 765ENDCAP



Base Trim
Part #: 765BASETRIM



Outside Corner
Part #: 765OUTCNR